

# Masjid Al-Madinah

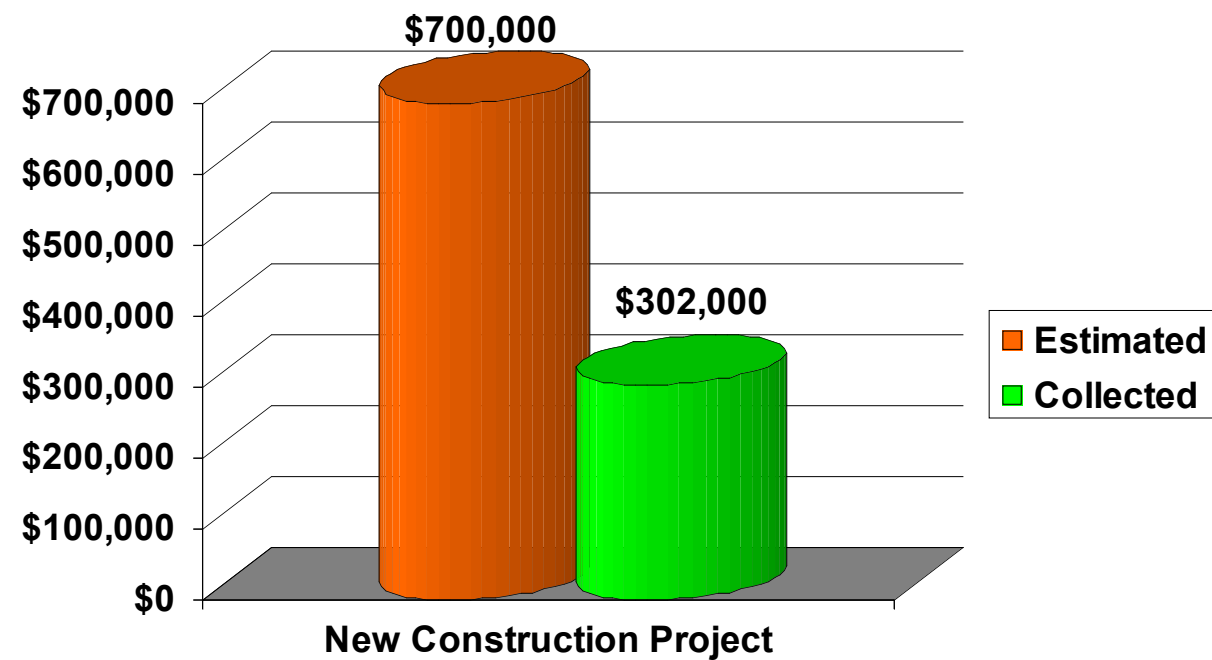
6800 Ludlow Street, Upper Darby, PA19082  
Telephone : 610-352-7774; Email: info@masjidalmdinah.org;  
Website: www.masjidalmdinah.org

## New Construction Project:

**Estimated Cost = \$700,000**

Collected (as of July 16, 2012) = \$302,000

**SHORT = \$398,000**



# Masjid Al-Madinah

UPPER DARBY, PA 19082

## MASJID EXPANSION AND REBUILDING PROJECT

# Masjid Al-Madinah

6800 Ludlow Street, Upper Darby, PA19082  
 Telephone : 610-352-7774; Email: info@masjidalmdinah.org;  
 Website: www.masjidalmdinah.org

Assalamu Alaikum Wa Rahmatullahi Wabarkatuh

Respected Brothers and Sisters in Islam:  
 Alhamdulillah, we got the approval from the Upper Darby Township to extend and rebuild our Masjid. Insha-Allah the construction work will start immediately after Ramadan.

**History:** Masjid Al Madinah purchased a single family home in July 1999 and transformed in to Masjid. Alhamdulillah over the years the Muslim community has out grown the Masjid's capacity. The Masjid is overcrowded for Jumua'h', Taraweeh and other activities. Therefore it makes it imperative for us to rebuild the existing building to conduct our religious activities.

**Objectives:** Insha-Allah, the proposed new building will serve as a focal point for the Muslim Community in Delaware County

- Provide means for Daily Salah, Jumua'h, Taraweeh and Eid Prayers.
- Provide after school - Evening Hifz and Quran teaching class for children's and adults
- Sunday Islamic School, Summer education camp and seminars.
- Provide funeral and family counseling services.
- Provide health care for the needy families through medical camps
- Prepare and provide after school homework services
- SAT Classes for High School Children's

## ESTIMATED COST OF THE PROJECT IS US \$700,000

“ Our beloved Prophet PBUH says in his famous Hadith. Whoever builds a Masjid for the sake of Allah, Allah will build for him a mansion in Paradise. ”

Wealth is never diminished because of charity.

We humbly request you to take part in this noble cause by rebuilding this Masjid. Only with your generous contributions and help, Insha-Allah we will be able to complete this project. May Allah accept your donation and reward you good in this world and the hereafter. Aameen!

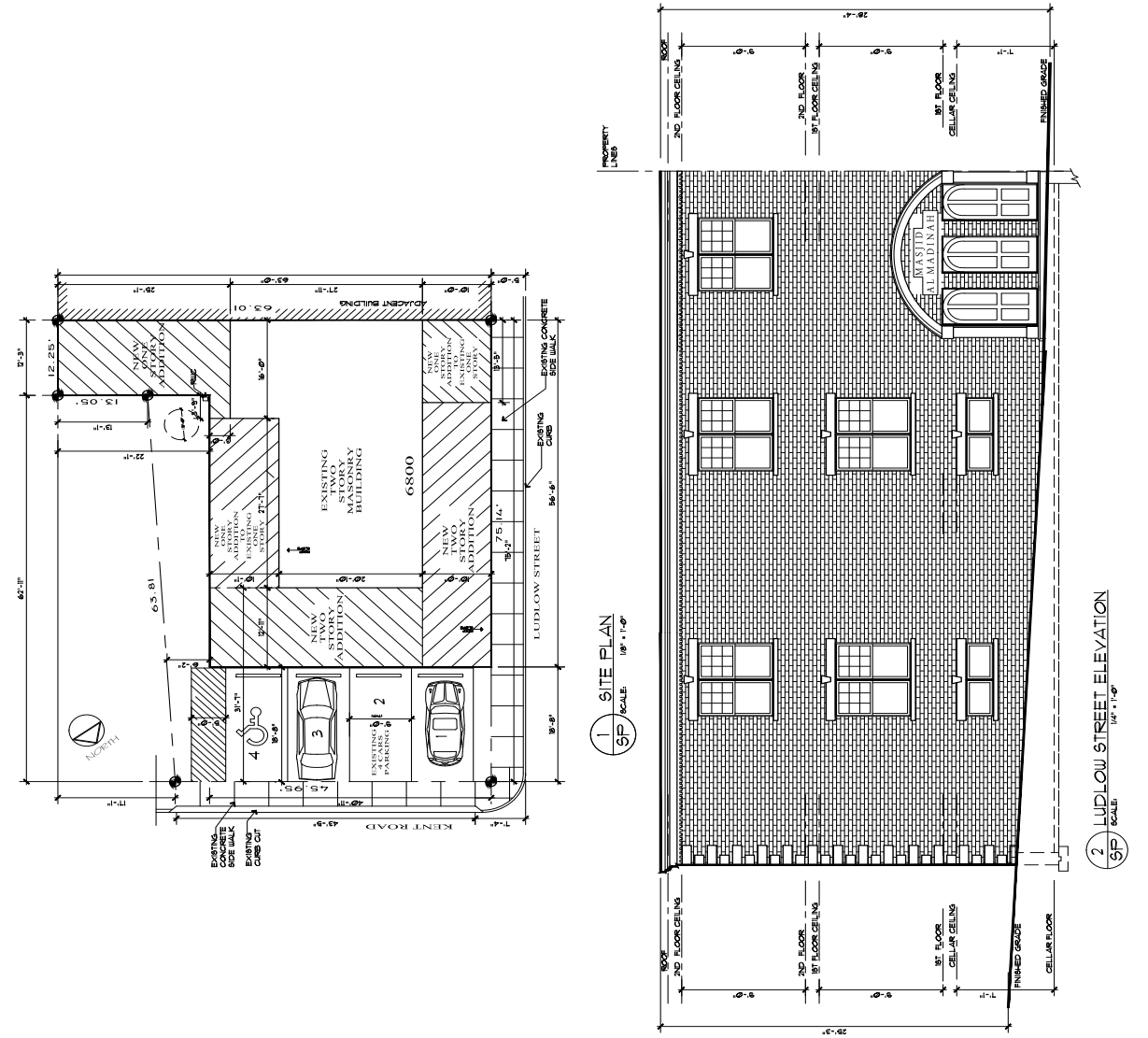
Jazakum Allahu Khairan  
 Shoura Council  
 Masjid Al Madinah

Contact:

Kamal Rahman : 484-557-1456 ; Abu Amin Rahman: 610-299-6242 Mehboob Sherif : 484-431-5168  
 Hafiz Imam Iqbal : 484-620-6043 ; Sheikh Siddique : 215-651-1923 Fazole Samad Arif : 610-731-3639  
 Atiq-ur-Rahman Saleem : 484-995-5461 ; Zaheer Khan: 215-964-7106

# Masjid Al-Madinah

OWNER: MASJID AL-MADINAH AL-MUNAWWARAH INCORPORATED	DRAWN BY: DATE: 2/1/2012	PROJECT NUMBER: 201206-6800	SCALE: 1/8" = 1'-0"
SHEET: 01		TOTAL SHEETS: 01	
SITE PLAN, LOCATION MAP			
NEW ADDITION MASJID AL-MADINAH AL-MUNAWWARAH 6800 LUDLOW STREET UPPER DARBY, PA 19082			



**DRAWING INDEX:**

- SP - SITE PLAN FROM ELEVATION MATERIAL SYMBOLS, GENERAL NOTES, ZONING CODE, ABBREVIATIONS, AND
- AI - BASEMENT PLAN
- A1 - FIRST FLOOR PLAN
- A2 - SECOND FLOOR PLAN
- SI - STRUCTURAL FLOOR PLAN
- ME - MECHANICAL ELECTRICAL PLUMBING AND HVAC FLOOR PLAN

**ABBREVIATIONS**

- AT - CENTER LINE
- B.L. - BRICK
- C.C. - CONCRETE
- C.M. - CONCRETE MASONRY UNIT
- G.C. - GYPSONUM BOARD
- G.F. - GYPSONUM BOARD
- H.C. - HOLLOW CORE CONCRETE
- I.F. - INSULATION
- J.C. - JOIST
- L.C. - LATH AND PLASTER
- M.C. - MASONRY CONCRETE
- N.C. - NON-COMBUSTIBLE
- O.C. - OVERLAP
- P.C. - PLASTER
- R.C. - REINFORCED CONCRETE
- S.C. - SOLAR CONTROL
- T.C. - TRUSS
- U.C. - UNFINISHED CONCRETE
- V.C. - VENEER
- W.C. - WATER
- X.C. - EXPOSED CONCRETE
- Y.C. - YIELD
- Z.C. - ZONE

**MATERIAL SYMBOLS:**

- EXISTING EXTERIOR WALL WITH INSULATION
- NEW EXTERIOR WALL WITH INSULATION
- NEW EXTERIOR WALL WITH INSULATION AND METAL STUD INTERIOR FINISH
- NEW EXTERIOR WALL WITH INSULATION AND METAL STUD INTERIOR FINISH AND METAL STUD INTERIOR FINISH
- NEW METAL STUD PARTITION WITH GIBBON ON BOTH SIDES
- NEW METAL STUD PARTITION WITH GIBBON ON ONE SIDE
- NEW METAL STUD PARTITION WITH GIBBON ON ONE SIDE AND METAL STUD INTERIOR FINISH
- NEW METAL STUD PARTITION WITH GIBBON ON ONE SIDE AND METAL STUD INTERIOR FINISH AND METAL STUD INTERIOR FINISH

**ZONING CODE DATA**

DISTRICT - RS	EXISTING	PROPOSED
LOT AREA	3,191 SQ. FT.	3,191 SQ. FT.
OCCUPIED AREA	1,428 SQ. FT.	1,428 SQ. FT.
OPEN AREA	1,763 SQ. FT.	1,763 SQ. FT.
FRONT YARD SETBACK	31'-1"	31'-1"
SIDE YARD SETBACK	6'-0"	6'-0"
BUILDING HEIGHT	39'-0"	39'-0"